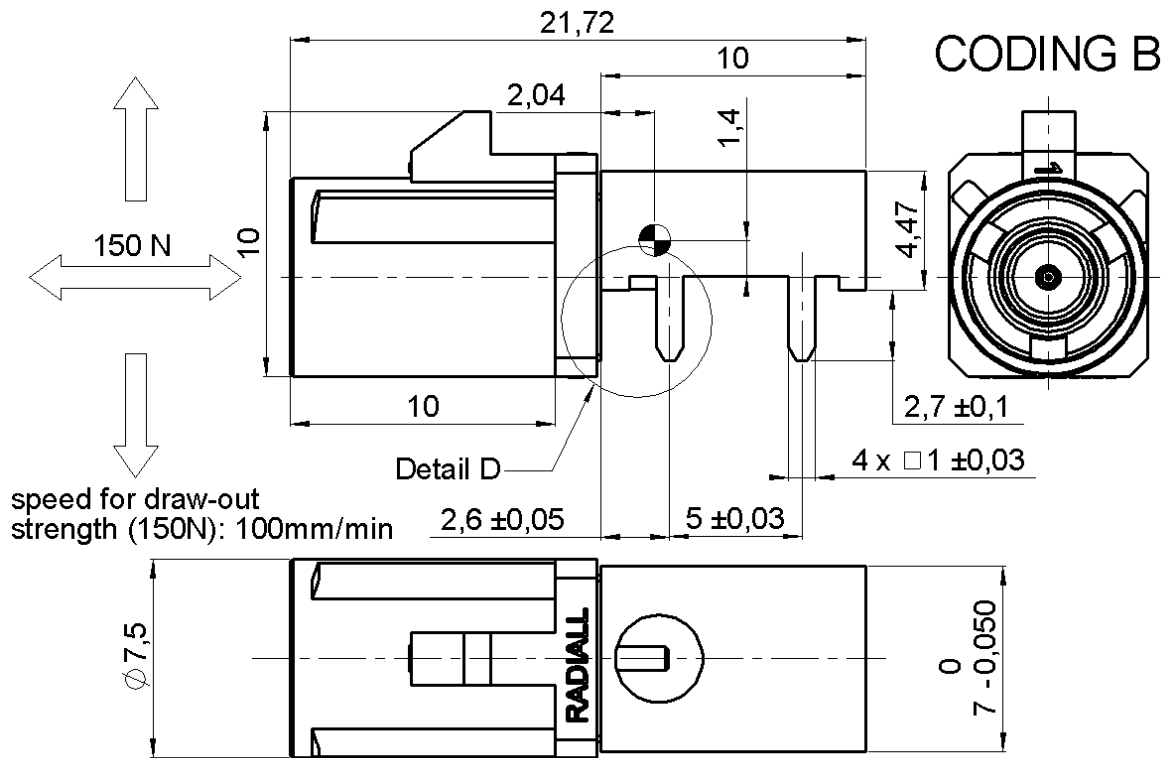


**STRAIGHT PCB RECEPTACLE**  
**EDGE CARD - PIN IN PASTE VERSION**

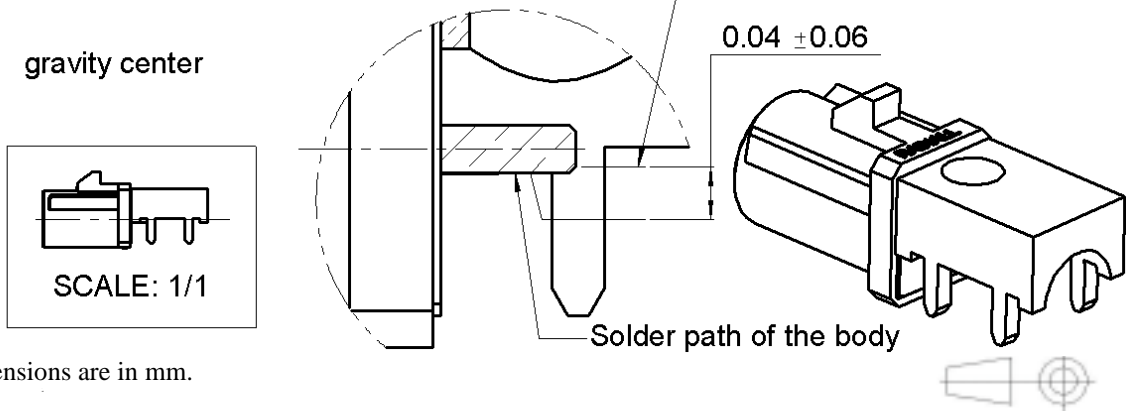
**R197.160.B07**

Series : **SMB**  
**CARLOCK**



speed for draw-out strength (150N): 100mm/min

Section of detail D (7 : 1)



All dimensions are in mm.

COMPONENTS	MATERIALS	PLATINGS (µm)	
BODY	BRASS	GOLD 0.2 OVER NICKEL 2	
CENTER CONTACT	BRASS	GOLD 0.5 OVER NICKEL 2	
OUTER CONTACT	-	-	
INSULATOR	PTFE	-	
GASKET	-	-	
OTHERS PARTS	-	-	
-	-	UL CLASSIFICATION	COLOR
HOUSING	PA 4.6 30%GF	UL 94 V2	WHITE RAL 9003
		* According to FAKRA specification	

**STRAIGHT PCB RECEPTACLE**  
**EDGE CARD - PIN IN PASTE VERSION**

**R197.160.B07**

Series : **SMB**  
**CARLOCK**

**PACKAGING**

Standard	Unit	Other
<b>350</b>	<b>'W' option</b>	<b>Contact us</b>

**SPECIFICATION**

**SIEMENS VDO 65 61 13.27.10-20 A**

**ELECTRICAL CHARACTERISTICS**

Impedance	<b>50</b>	$\Omega$
Frequency	<b>0-4</b>	GHz
VSWR	<b>1.06* + 0,0130</b>	x F(GHz) Maxi
Insertion loss	<b>0.03*</b>	$\sqrt{F(GHz)}$ dB Maxi
RF leakage	- (	- F(GHz)) dB Maxi
Voltage rating	<b>335</b>	Veff Maxi
Dielectric withstanding voltage	<b>1000</b>	Veff mini
Insulation resistance	<b>1000</b>	M $\Omega$ mini

**ENVIRONMENTAL**

Operating temperature	<b>-40/+110</b>	$^{\circ}$ C
Hermetic seal	<b>NA</b>	Atm.cm3/s
Panel leakage	<b>NA</b>	

**OTHERS CHARACTERISTICS**

Assembly instruction

Others :

\*COAX TRANSMISSION LINE ONLY

**MECHANICAL CHARACTERISTICS**

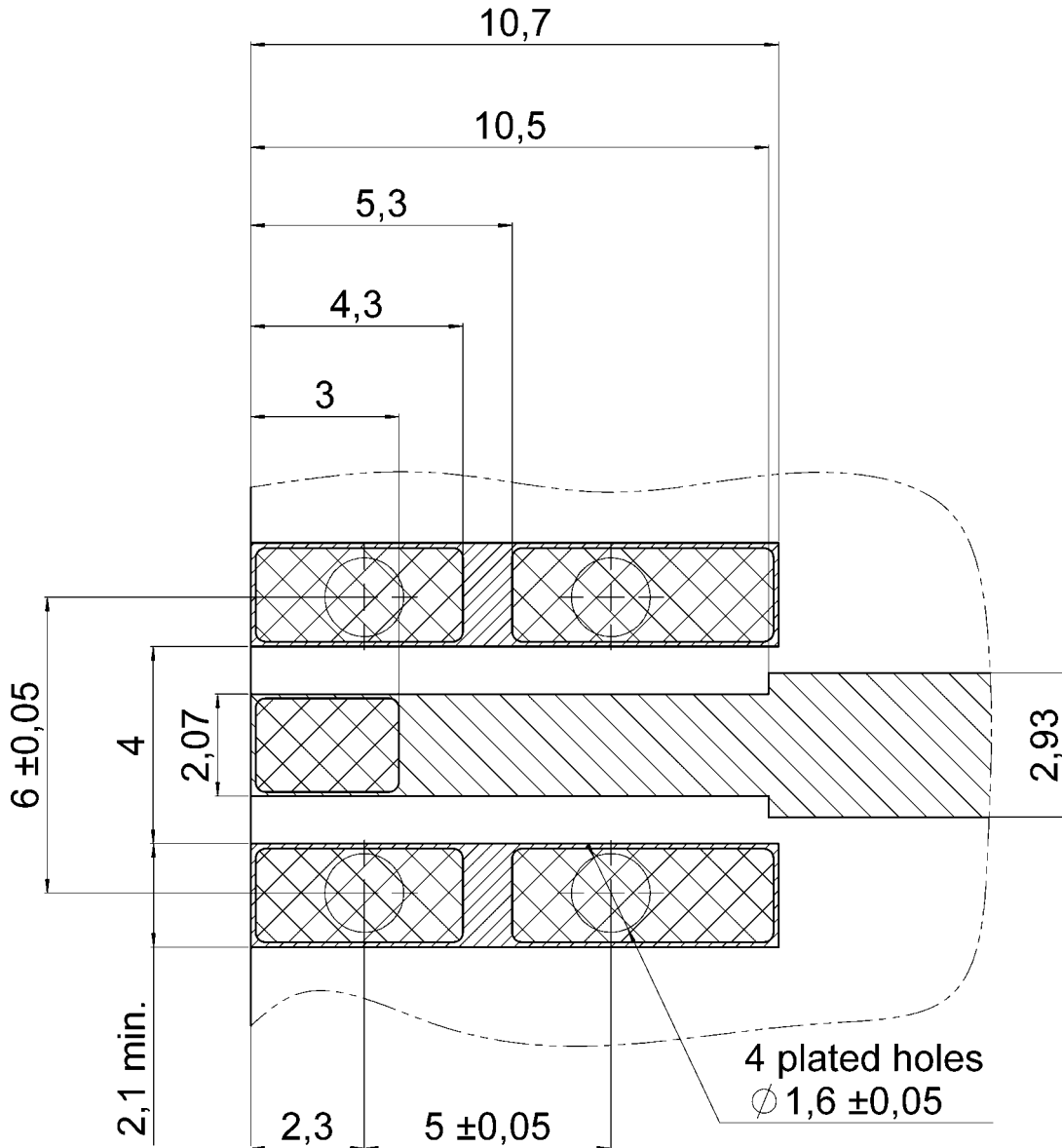
Center contact retention		
Axial force – Mating end	<b>10</b>	N mini
Axial force – Opposite end	<b>10</b>	N mini
Torque	<b>NA</b>	N.cm mini
Recommended torque		
Mating	<b>NA</b>	N.cm
Panel nut	<b>NA</b>	N.cm
Mating life	<b>100</b>	Cycles mini
Weight	<b>2,6800</b>	g

**STRAIGHT PCB RECEPTACLE**  
**EDGE CARD - PIN IN PASTE VERSION**

**R197.160.B07**

Series : SMB  
 CARLOCK

**MOUNTING ZONE FOR RECEPTACLE**



Thickness of PCB: 1,6 mm.

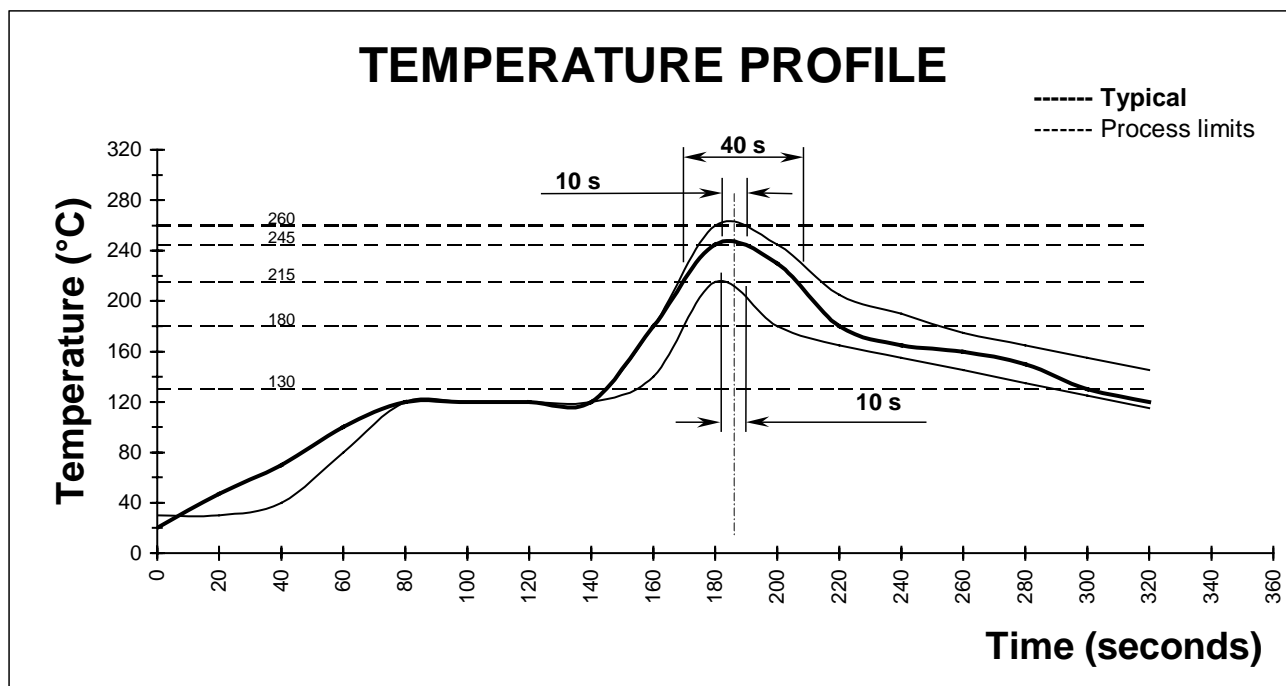
Material of PCB: FR4 ( $\epsilon_r = 4.6$ ).

Solder paste has to be printed onto the land of solder and into holes to permit Pin In Hole Reflow

-  Ground track
-  Signal track
-  Land for solder

**STRAIGHT PCB RECEPTACLE****R197.160.B07****EDGE CARD - PIN IN PASTE VERSION**Series : **SMB**  
**CARLOCK****SOLDER PROCEDURE**

- 1 - Deposit solder paste "Sn63Pb35Ag2" on mounting zone by screen printing application. We recommend a low Residue Solid Flux.  
We advise a thickness of 0,2 millimetres min. (0,008 inch min.).  
The holes must be totaly filled with cream  
Verify that the edges of the zone are clean.
- 2 - Placement of the receptacle on the mounting zone with an automatic machine of "pick and place" type.  
Video camera is preferred to check the positioning of the component .  
Adhesive agents are forbidden on the receptacle.
- 3 - Soldering by reflow process.  
The typical profile to use is given below.
- 4 - Clean printed circuit boards.
- 5 - Check of solder joints and position of the component by visual inspection



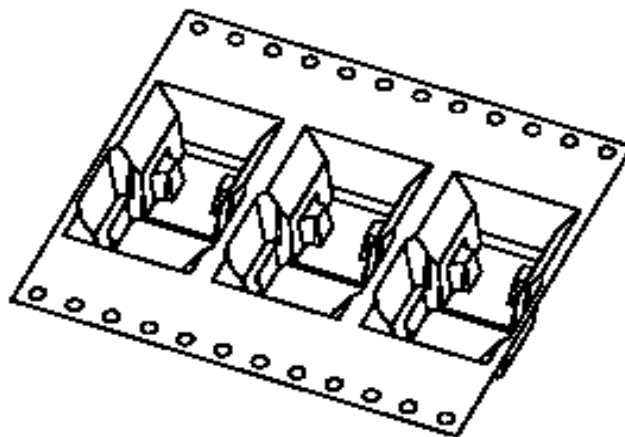
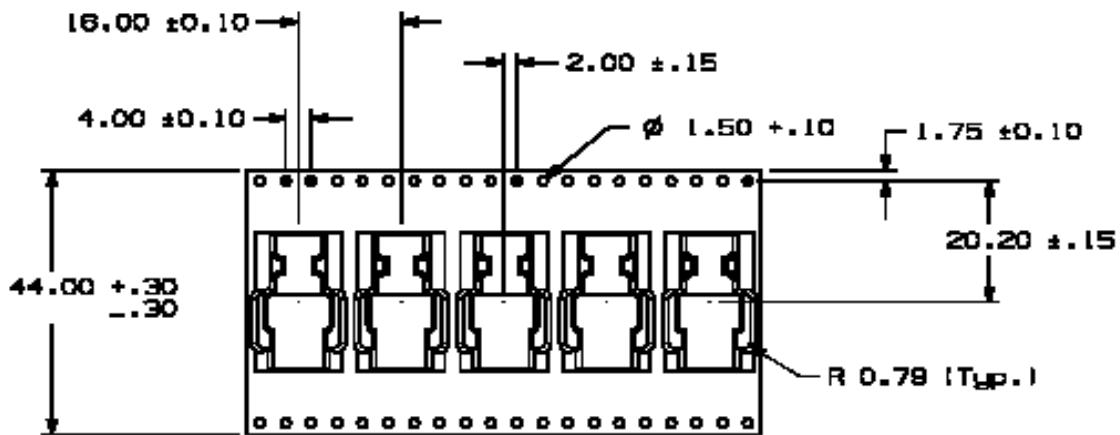
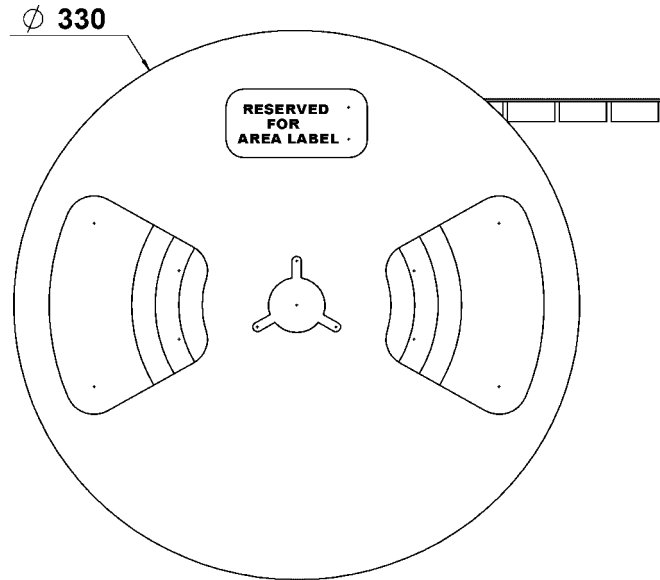
**STRAIGHT PCB RECEPTACLE**  
**EDGE CARD - PIN IN PASTE VERSION**

**R197.160.B07**

Series : SMB  
 CARLOCK

**REEL PAKAGING PER 350**

CELL MATERIAL :  
 Polycarbonate  
 COVER TAPE MATERIAL :  
 conductive polyester film tape

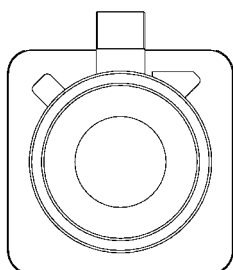


**STRAIGHT PCB RECEPTACLE**

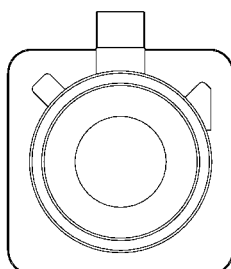
**R197.160.B07**

**EDGE CARD - PIN IN PASTE VERSION**

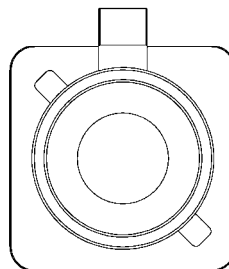
Series : **SMB**  
**CARLOCK**



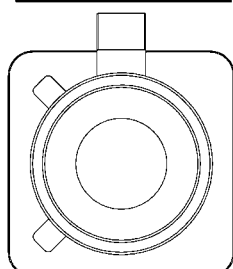
**CODING A**  
COLOR BLACK  
RAL 9005



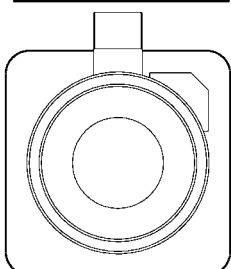
**CODING B**  
COLOR WHITE  
RAL 9003



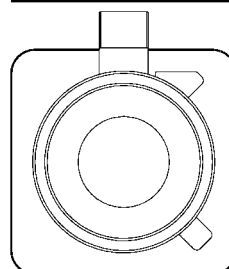
**CODING C**  
COLOR BLUE  
RAL 5005



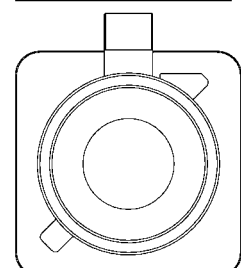
**CODING D**  
COLOR BORDEAUX  
VIOLET  
RAL 4004



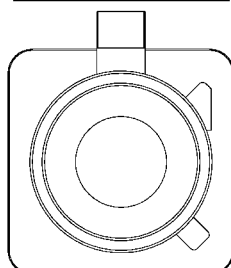
**CODING E**  
COLOR GREEN  
RAL 6002



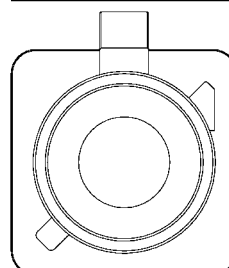
**CODING F**  
COLOR BROWN  
RAL 8011



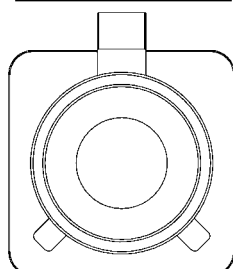
**CODING G**  
COLOR GREY  
RAL7031



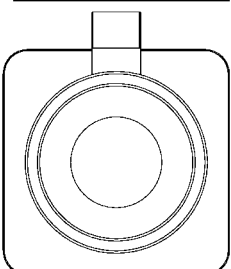
**CODING H**  
COLOR VIOLET  
RAL 4003



**CODING I**  
COLOR BEIGE  
RAL 1001



**CODING K**  
COLOR CURRY  
RAL 1027



**CODING Z**  
COLOR WATER BLUE  
RAL 5021

**UL CLASSIFICATION**  
UL 94V-2

\*According to FAKRA specifications

To obtain other coding for the connector please change the letter by the needed coding letter into the Part Number

**STRAIGHT PCB RECEPTACLE**  
**EDGE CARD - PIN IN PASTE VERSION**

**R197.160.B07**

Series : **SMB**  
**CARLOCK**

**CONNECTOR INTERFACE ACCORDING TO FAKRA STANDARD**

